

ANNEX 8

LOG BOOK

(LIFTING PLATFORM)

MANUFACTURER: GSR S.p.A.

PLATFORM TYPE: B240PX

SERIAL N° 8158

Date: RIMINI 18/10/2019

INSTALLER: GSR SpA

INSTALLATION TYPE: _____

SERIAL N°

DATE OF TESTING ON VEHICLE (Annex 7) : 18/10/2019

**THIS BOOK ALONG WITH THE ANNEXES AND THE USE AND MAINTENANCE INSTRUCTIONS MUST ALWAYS FOLLOW THE MACHINE.
ALL INTERVENTIONS STARTING FROM THE SETTING AT WORK OF THE MACHINE, INCL. ANY ORDINARY AND EXTRAORDINARY MAINTENANCE MUST BE RECORDED IN IT. ALL INTERVENTIONS HAVE TO BE PERFORMED EXCLUSIVELY BY SKILLED AND QUALIFIED TECHNICIANS IN COMPLIANCE WITH THE RULES IN FORCE AND THE MANUFACTURER' S AND AUTHORIZED INSTALLER' S INSTRUCTIONS.**

CONSTRUCTIONS FEATURES OF THE LIFTING PLATFORM N° 8158

1 Main data

Manufacturer or supplier of the lifting platform: **GSR S.p.A. - Via Lea Giaccaglia, 5 - 47924 RIMINI - ITALY**

Installer on vehicle: **GSR SpA - Via Lea Giaccaglia, 5 - 47924 - RIMINI**

Definition: **AERIAL PLATFORM**

Type: **B240PX**

Year of construction : **2019**

Serial number: **8158**

Date of delivery/set at work on _____^(*)

Permissible operating pressure: See hydraulic schemes

(on hydraulic platforms and if the pressure generator is not a part of the platform)

Capacity: **80 / 250 Kg** (see enclosed work diagram)

Permissible load distribution (with **80 kg**): n° **1** person x **80 Kg** = **80 Kg** + **0 Kg** (equipment)

Permissible load distribution (with **250 kg**): n° **2** person x **80 Kg** = **160 Kg** + **90 Kg** (equipment)

Mass: **3490 Kg**^(*)

(for mobile platforms, except the loading ones)

Set for staying under the loading means ~~yes~~ / **no**

2 Additional general data relating to self-lifting platforms

Permissible number of persons on the working platform : **1 / 2**

Permissible lateral static force on the working platform : **200 N** for person: max **400 N** for two or more persons (e.g. by hand force)

Wind speed at which the use isn't allowed

≥ 12,5 m /s (wind-force **6** according to Beaufort)

Performances of the lifting platform:

- high at the maximum vertical extension **21,7 m**^(*) (to the basket's floor).

Maximum outreach of the working platform and lifting measured from the center column up to the most external point of the basket (if there is the basket's rotation the cage have not to be rotated) in metres: _____ m (with **80 kg**) (with **250 kg**) (see enclosed work diagram).

Stability against overturning is verified with stabilizers resting on the ground and **without** tyres resting on the ground.^(*)

Steadiness against tipping over has been checked for a slant of the stabilised vehicle of:

LENGHWISE 1°^(*)

CROSSWISE 1°^(*)

^(*)FULFILLED BY THE INSTALLER ON VEHICLE.

6 Electric equipment

Input voltage : **12 V** (three-phase, alternate, direct current)

Control voltage: **12 V**

Suitable for the use ^(*): outdoors
 in moist and wet environments
~~in places with explosion risk~~
~~in the presence of dust~~

7 Safety devices

Safety against tipping; the machine is provided with horizontal reach limiting devices::
MOMENT LIMITER WITHOUT LOAD SENSING SYSTEM WITH ENHANCED OVERLOAD CRITERIA

Protection relating to eventual upwards or downwards moves of the lifting platform in the case of failure of bolts, ropes or chains:

Aerial platform with chains and/or equivalent systems => **No**;

When fitted, what type of device =>

Protection of the working platform against eventual upwards or downwards moves due to leaks in the hydraulic or pneumatic system: **PILOTED LOCKING VALVES ON THE CYLINDERS**

Additional information on correct stabilisation:

- **Inclined stabilisers with control microswitches for ground contact + vertical/lateral extension (green monitoring strip)**
- **Extensible vertical stabilisers with control microswitches for ground contact + lateral extension**
- **Monitoring of front or rear tyres raised off the ground (failing stabiliser vertical extension monitoring)**

Protection of the hydraulic system against excessive pressures: **RELIEF VALVES.**

Hydraulic circuit **MAIN RELIEF VALVE** (*for the setting you have to see the hydraulic system here enclosed*)

*Cancel what is not applicable

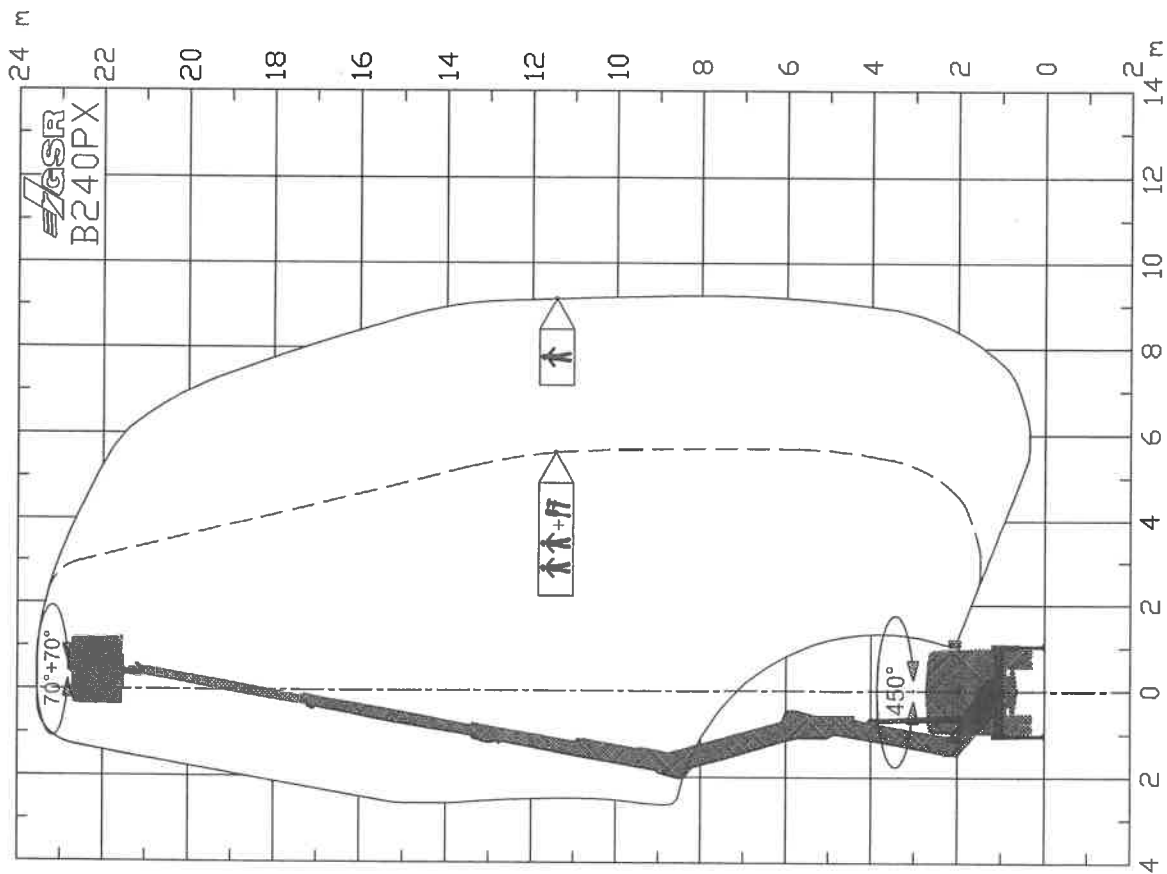
MEWP/MODEL:	B240PX	SERIAL N°:	8158
MANUFACTURER' S YEAR:	2019	MASS KG:	3490
MAX BASKET CAPACITY KG:	80	N° PERSONS:	1
		MAX HORIZONTAL FORCE N:	200
MAX BASKET CAPACITY KG:	250	N° PERSONS:	2
		MAX HORIZONTAL FORCE N:	400
MAX WIND $W=m/s$:	12,5	HYDRAULIC – PLAN CODE:	915.125
			915.130
max ALLOWED SLOPE DEG. LONG./TRANSV.:	1/1	ELECTRIC – PLAN CODE:	913.079
LIMITER DEVICES:	435.363	BASKET CODE:	155.090
HYDRAULIC PRESSURE BAR:	200	CAPACITY L/MIN.:	12
VEHICLE TYPE:	438.A052	OUTRIGGERS CODE:	339.362
			339.362
CHASSIS NUMBER:	WDB9071331N031199		
MAX OUTRIGGERS REACTION FRONT (daN):	2250	MAX OUTRIGGERS REACTION REAR(daN):	2500
MAX TYRES REACTION FRONT (daN):		MAX TYRES REACTION REAR (daN):	

Technical drawing of the GSR B240PX spotlight. The drawing shows the beam spread at a distance of 24 meters. The beam angle is indicated as 70° + 70°. The weight information is provided in three columns:

Carico Nominale Rated Load Nenntragfah...im korb Charge nominale Carga clasificada	max: (+) = 250 Kg () = 80 Kg	Vedi Manuale See Manual Handbuch sehen Voir le manuel Ver el manual	
--	---------------------------------------	---	--

Approximate data from the beam spread diagram:

Distance (m)	Beam Width (m)
12	~1.5
14	~1.8
16	~2.2
18	~2.8
20	~3.5
22	~4.5
24	~5.5



The graph illustrates the relationship between the number of workers (N) and the number of machines (M). The vertical axis represents the number of workers (N), ranging from 0 to 10. The horizontal axis represents the number of machines (M), ranging from 0 to 14. A curve is plotted, showing that as the number of machines increases, the number of workers required also increases, but at a decreasing rate, suggesting diminishing returns.

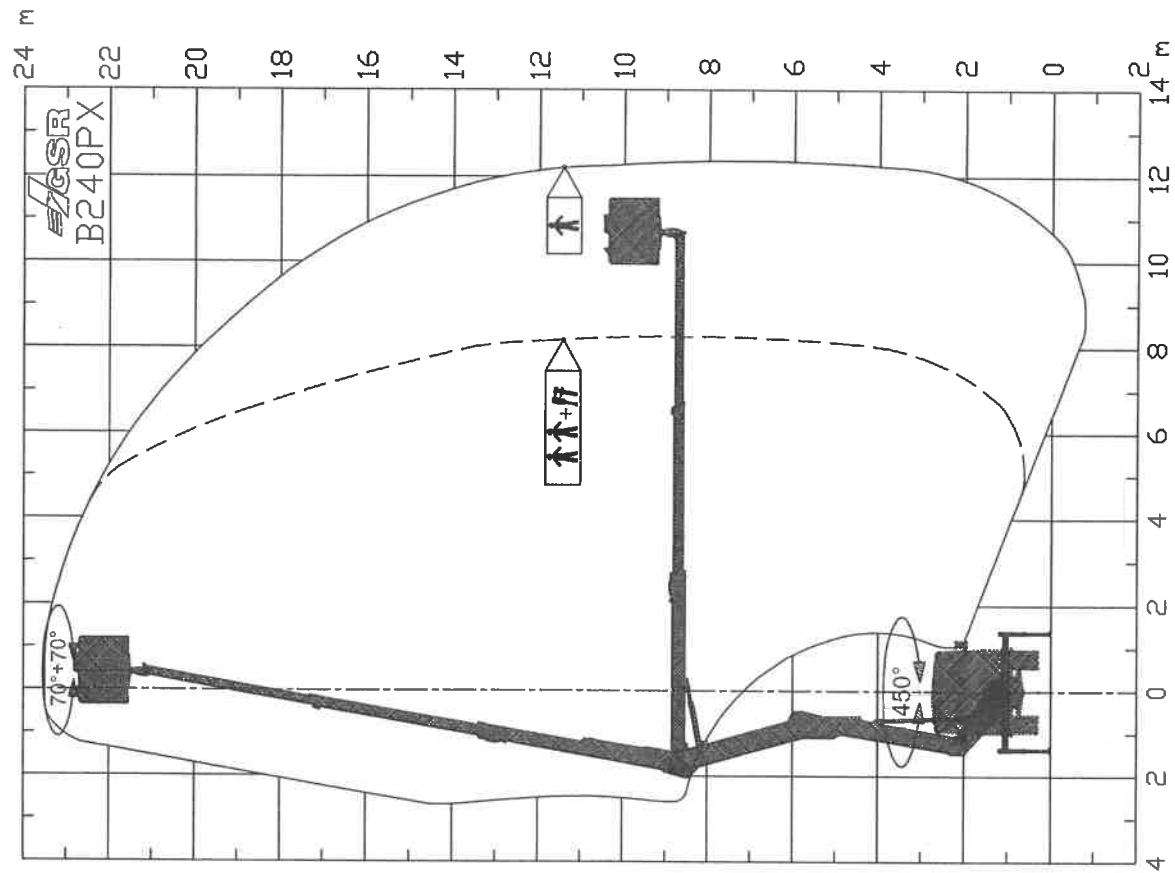
Number of Machines (M)	Number of Workers (N)
0	0
2	2
4	4
6	5.5
8	6.5
10	7.5

Carico Nominale
Rated Load
Nenntragfah...im korb
Charge nominale
Carga clasificada

max: (+) = 250 Kg
() = 80 Kg

Vedi Manuale
See Manual
Handbuch sehen
Voir le manuel
Ver el manual

APPROXIMATE DATA - TECNICHE ADEGUATE VORBEHALTEN



Technical drawing of a road cross-section. The drawing shows a road with a dashed center line, a solid edge line, and a solid shoulder line. A small building is shown on the left side of the road. The drawing is on a grid with a vertical axis labeled 0, 2, 4, 6, 8, 10 and a horizontal axis labeled 8, 10, 12, 14 m. The drawing is titled "DENOMINAZIONE GRAFICO DI LAVORO" and "CODICE 439.558".

Spett. le
Q-PLATFORMS NV IMMO
Sunshine Ledestraat, 51
- LEMBEKE (BE) -

RIMINI, li **18/10/2019**
(data/date)

Oggetto: *In Allegato Vi inviamo l'elenco dei documenti della:*

Subjet: Enclosed we are sending you the list of the documents of the:

Piattaforma Aerea Mod.: n° di serie:

Aerial Platform Mod.: **B240PX** serial N° **8158**

Installata su veicolo da:

To be installed on vehicle by: **GSR SpA**



Registro di controllo (Allegato 8) compilato comprensivo dei seguenti sottoallegati:
Log Book (Annex 8) filled and completed with the following annexes:



1.1 Targhetta Costruttore e CE compilata
Manufacturer's + EC plate



1.2 Schema di massima dell'allestimento codice
Tentative outline of equipment code **438.A052**



1.3 Diagramma di lavoro codice
Working diagram code **439.558**



1.4 Schema di verifica prestazioni codice
Checking scheme code **435.363**



1.5 Schemi idraulici codice
Hydraulic diagrams code **915.125 - 915.130**



1.6 Schemi elettrici codice
Electric diagrams code **913.080 -**



1.7 Certificati catene (Piattaforma aerea dotata di catene):
Chains certificates (Aerial Platform with chains **No**)



1.8 Informazione tecnica codice
Technical information Code **984067 - 984156**
GB - GB
GB - GB

Results of the tests performed by the expert before the first(absolutely first)setting at work of the upper structure only

Pre-check

The pre-check has been performed regularly.

RIMINI

(Place,date)

18/10/2019

GSR S.p.A.
a socio unico
IL PRESIDENTE
VINCENTO GENTILI

Manufacturer business name and address

(in block letters):

GSR S.p.A.

Via Lea Giaccaglia n.5 – 47924 RIMINI
Tel. 0541 / 397811 – Tfx 0541 / 384491
Cod. Fisc. – Part. IVA: 01 175 160 405

Construction check

The construction check has been performed regularly.

RIMINI

(Place,date)

18/10/2019

GSR S.p.A.
a socio unico
IL PRESIDENTE
VINCENTO GENTILI

Manufacturer business name and address

(in block letters):

GSR S.p.A.

Via Lea Giaccaglia n.5 – 47924 RIMINI
Tel. 0541 / 397811 – Tfx 0541 / 384491
Cod. Fisc. – Part. IVA: 01 175 160 405

Results of the ordinary/extraordinary and eventually additional() tests*

The lifting platform has been submitted to ordinary/extraordinary (*) tests:
Anomalies have/have not been found (*):

Type of tests:

Remaining partial tests:

There are/are not objections for the continuation of the use of the lifting platform (*).

Additional tests are/are not necessary (*).

The Expert / Technician

(Place, date)

(signature)

Name of the Expert/Technician

(in block letters)

Name and address Company

Anomalies/failures have been viewed (**)

Anomalies/failures have been repaired (**):

(*) Cancel what is not applicable

(**) The signed confirmation of the user or the person in charge with date and signature is requested.

(**) The signed confirmation of the user or the person in charge with date and signature is requested.

(**) The signed confirmation of the user or the person in charge with date and signature is requested.

GSR S.p.A.
47924 Rimini (RN) Italy – Via Lea Giaccaglia, 5
Tel. (+39) 0541.397811 – Fax (+39) 0541.384491 – E-mail: info@gsrspa.it - <http://www.gsrspa.it>
Cod. Fisc./Part.IVA e Reg Imprese RN 01175160405 – R.E.A. RN 181515 – Capitale Sociale € 500.000 i.v.

Declaration of Conformity

Manufacturer: **GSR SpA**

Address: **Via Lea Giaccaglia, 5
47924 - RIMINI – ITALIA**

DECLARES THAT

Lifting equipment model **GSR B240PX** registered name **B240PX**
factory number **8158**, mounted on vehicle **MERCEDES 311CDI**
net installed power **4,45 kw** frame n° **WDB9071331N031199**

- complies with European Directive 2006/42/CE (Machine Directives)
- complies in all parts to the above mentioned CE type test, pursuant to Directive Attachment IV, by:

ECO S.p.A.
Via Mengolina n°33 int.5 –48018 –Faenza
notified body N° **0714**

which issued exam certificate N° :
714-M-0159 Rev.01 del 08/04/2019

The electric and electronic apparatus and cables of said machine comply with the specifications of the Directive relative to electromagnetic compatibility (Directive 2014/30/UE) and with the low voltage Directive (Directive 2014/35/UE).

The machine also complies with the regulations of directive 2000/14/CE (environmental acoustic emissions of machines and equipment intended for outdoor use), as defined in the procedures found in attachment V.

Measured sound output level L_{WA}: 90 dB(A)

Guaranteed sound output level L_{WA} : 90 dB(A)

GSR SpA - Via Lea Giaccaglia, 5 –47924 –RIMINI – ITALY is authorized to constitute the technical file.

This declaration does not apply to any unspecified accessories that are not directly inherent to the function of lifting persons.

RIMINI 18/10/2019

GSR SpA
President
Vincenzo Gentili



GSR S.p.A.
e socio unico
IL PRESIDENTE
VINCENZO GENTILI